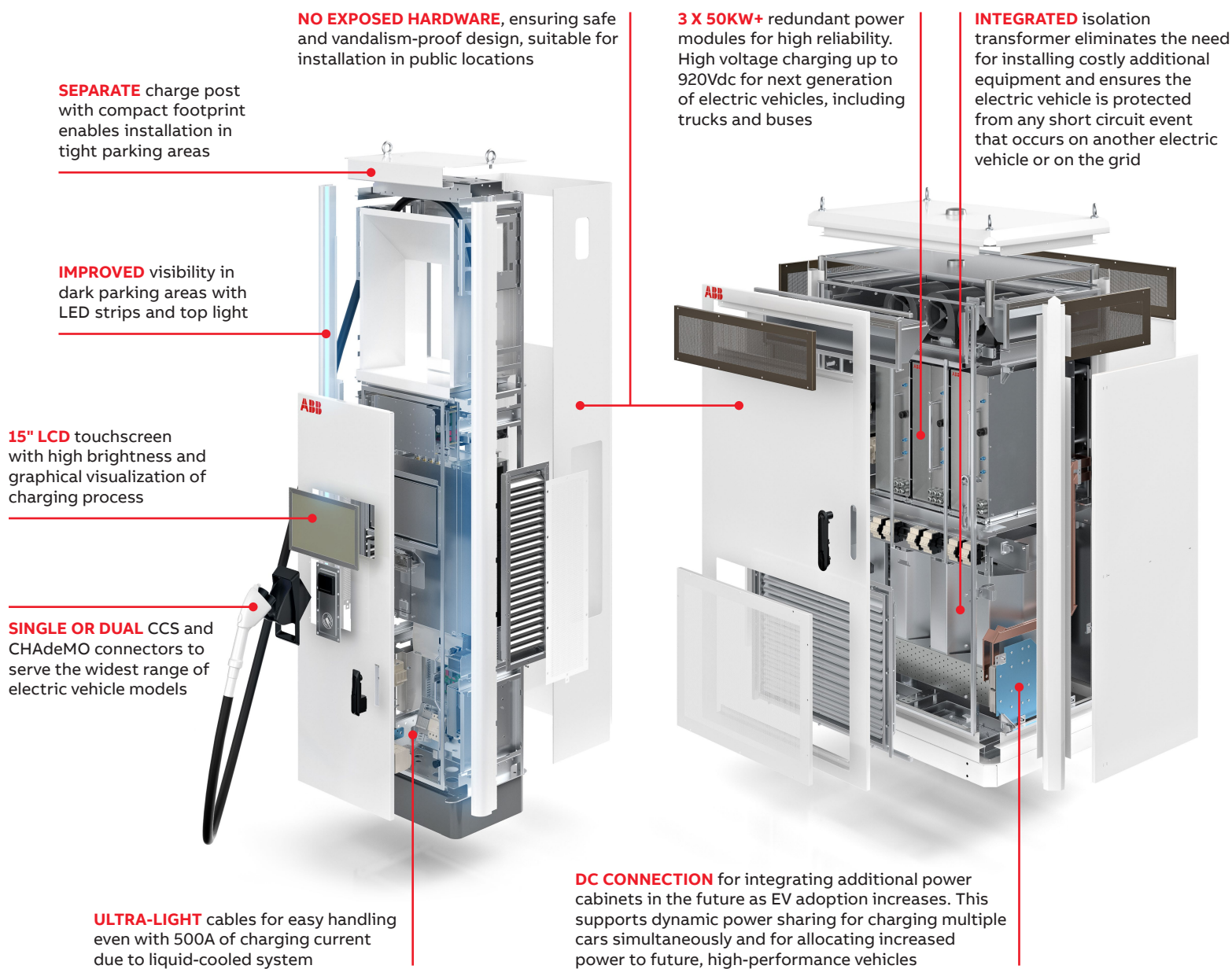


INFOGRAPHIC | Terra High Power Gen II Charger



SPECIFICATIONS

CHARGING POWER

160 kW continuous /
175 kW peak

MAX CHARGING VOLTAGE

500Vdc CHAdeMO connector
920Vdc CCS connector

POWER EFFICIENCY

94% at full load

DIMENSIONS & WEIGHT

Charge Post

Height 239 cm
Width 62 cm
Depth 44 cm

250 kg

Power Cabinet

Height 203 cm
Width 117 cm
Depth 77 cm

1340 kg