

2020 Porsche Taycan

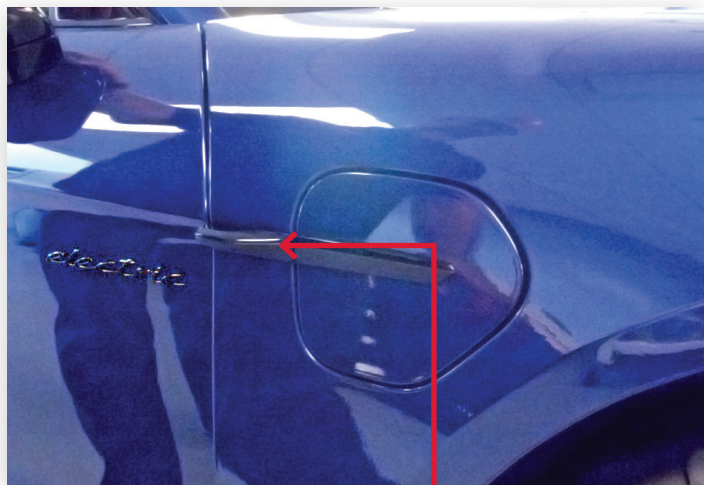
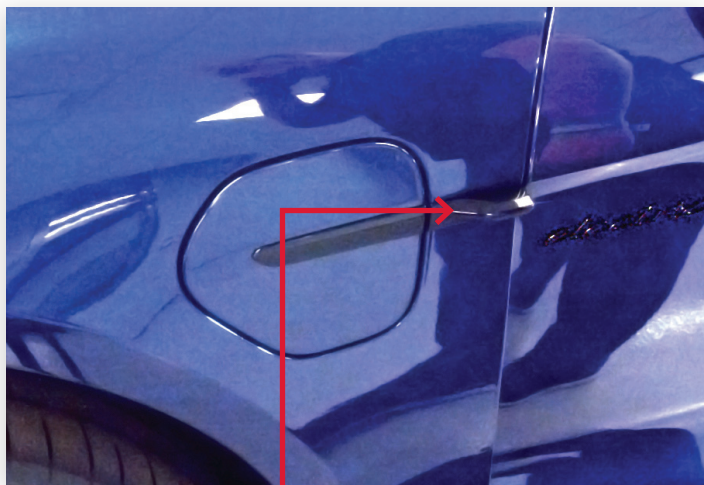
Charge Door Operation & Level 1/2/3 Recognition

Porsche Taycans are equipped with two charge door styles



The Electrically Actuated Charge Door is easily identified by its swipe sensor.

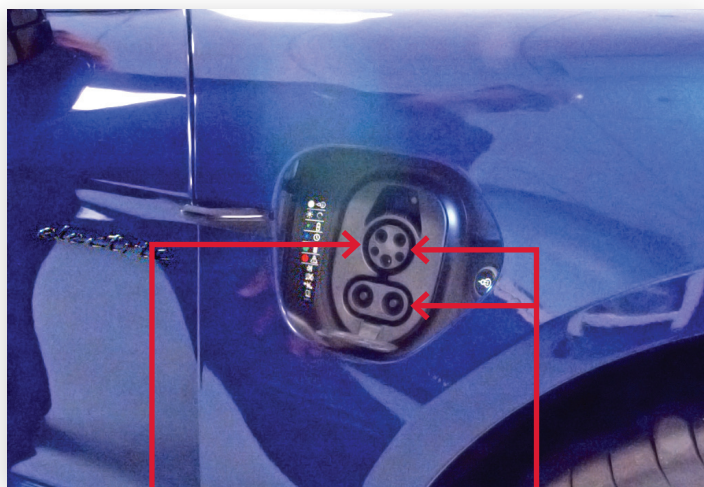
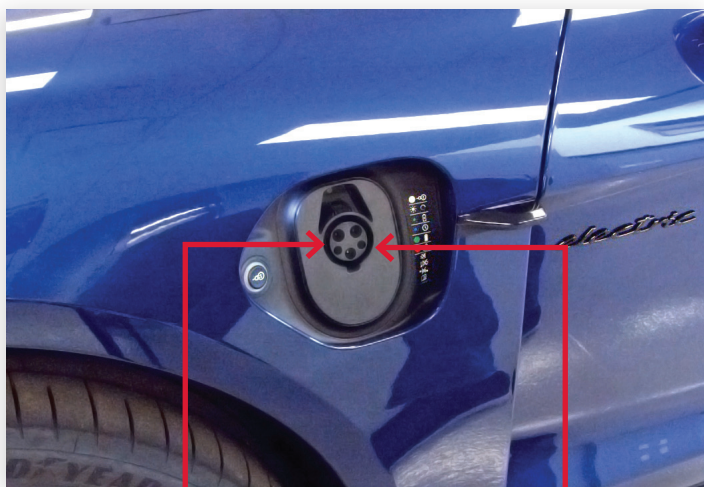
In order to open this charge door, the vehicle must be unlocked or the proximity fob must be within range of the charge door and the vehicle must be in PARK.



Swipe you hand under the sensor to open the charge door and the door will raise into the fender revealing the charge port.

Driver Side – Charge Door Open

Passenger Side - Charge Door Open

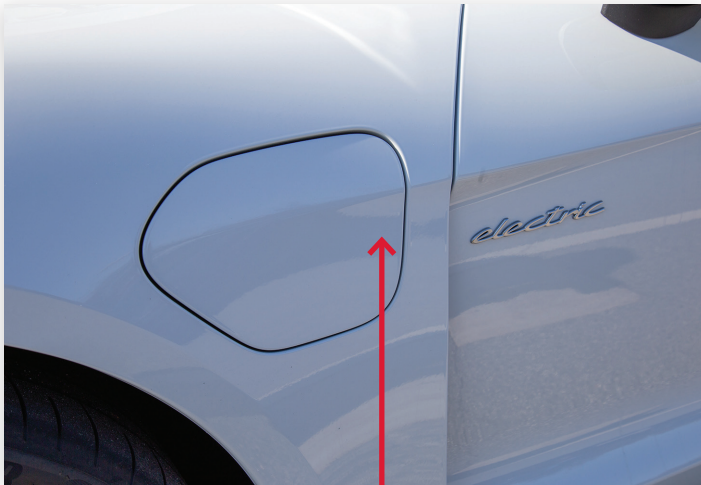


Level 1 Charging

Level 2 Charging

Level 3 Charging

The mechanically operated charge door is identified by its smooth design.



Simply press in on the rear portion of the charge door and it will swing forward to reveal the charge port.